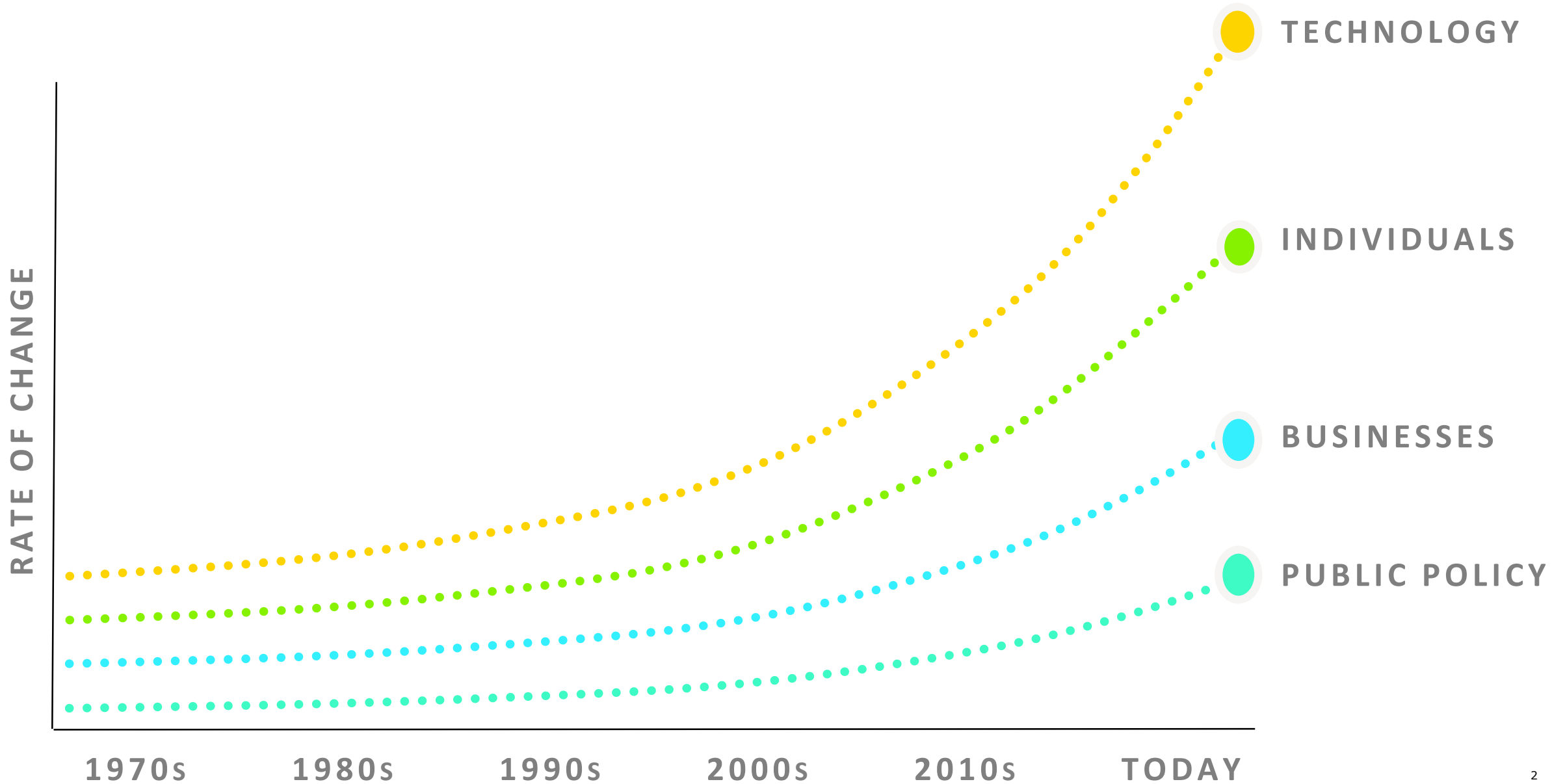


Deloitte.



Future of Work
RUSI

Disruption is everywhere... but businesses are lagging behind

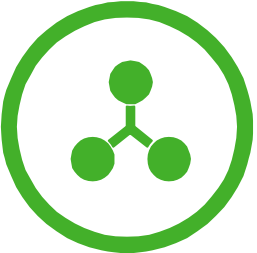


We need to re-imagine how we work...

How work is delivered

A blue gear icon centered within a blue circular outline, all contained within a blue rounded square border.

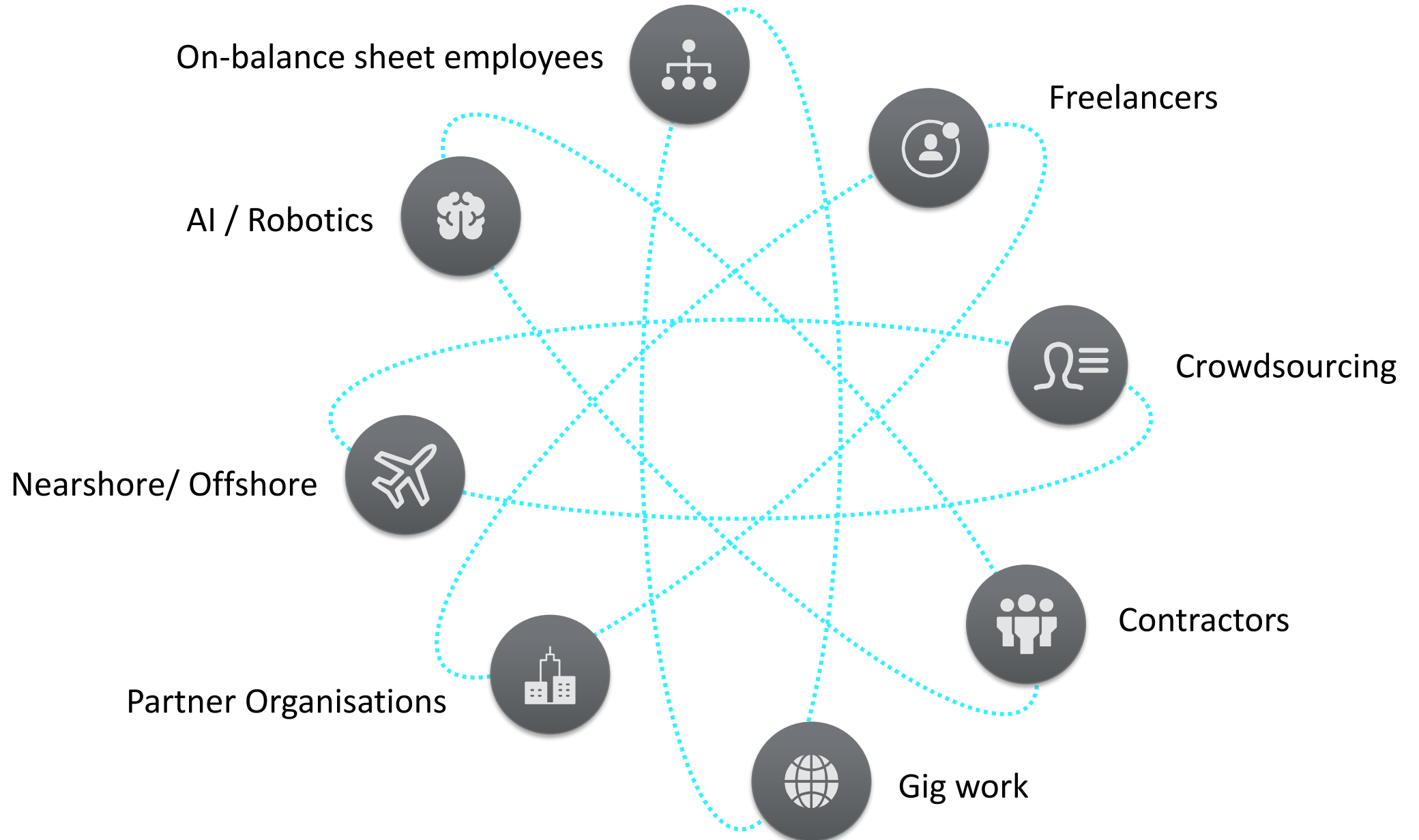
How work is organised

A green network diagram icon consisting of three nodes connected by lines, centered within a green circular outline, all contained within a green rounded square border.

How people experience work

A yellow person icon standing on a circular base, centered within a yellow circular outline, all contained within a yellow rounded square border.

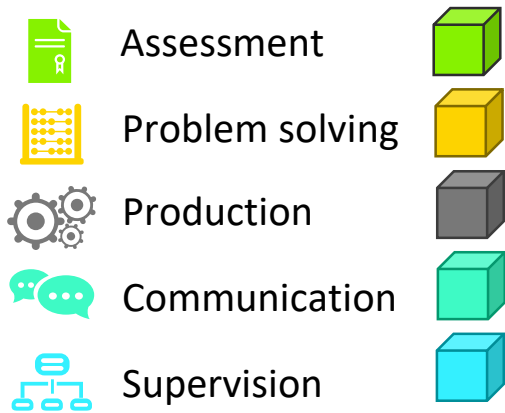
How work is delivered



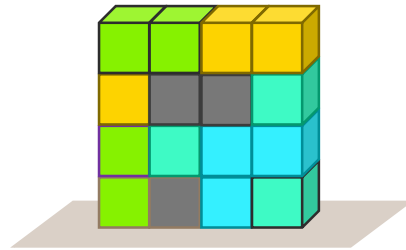
How work is organised



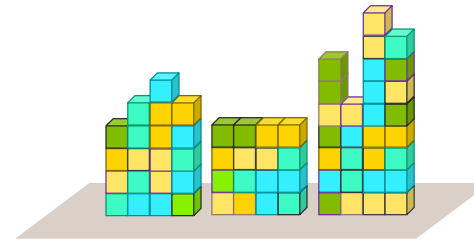
Work architecture



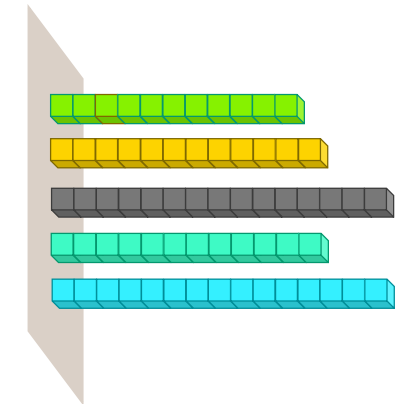
Work describing roles



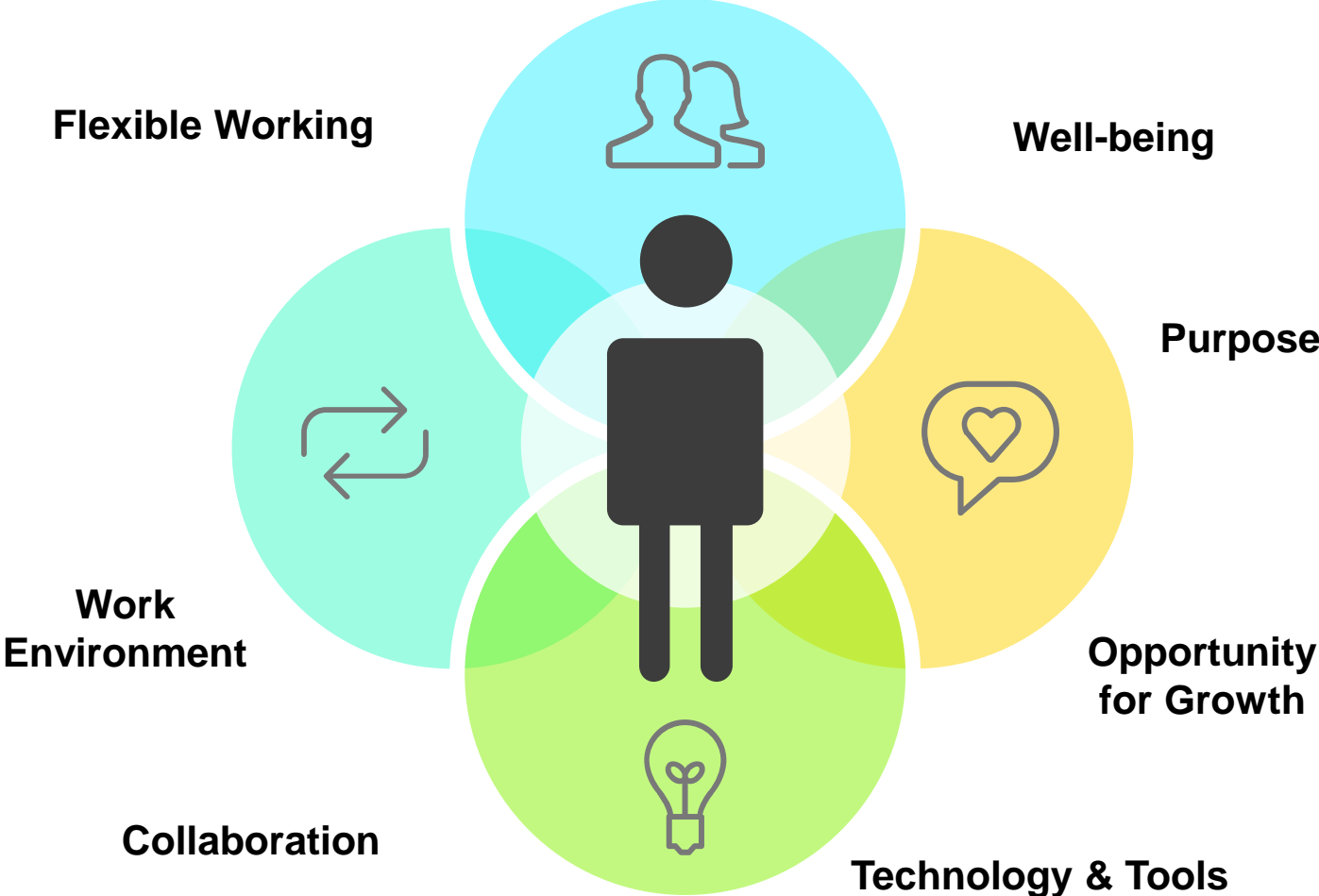
Organisation-wide work profile



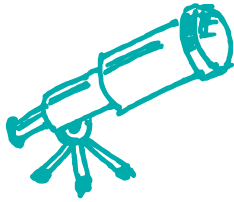
Aggregated work output



How people experience work



Where to start...



THINK BIG

What is the art of the possible?



START SMALL

What small things can I do now and learn from?
Prioritise and pilot in targeted populations



ACT FAST

Co-create. Fail fast and learn



This publication has been written in general terms and we recommend that you obtain professional advice before acting or refraining from action on any of the contents of this publication. Deloitte MCS Limited accepts no liability for any loss occasioned to any person acting or refraining from action as a result of any material in this publication.

Deloitte MCS Limited is registered in England and Wales with registered number 03311052 and its registered office at Hill House, 1 Little New Street, London, EC4A 3TR, United Kingdom.

Deloitte MCS Limited is a subsidiary of Deloitte LLP, which is the United Kingdom affiliate of Deloitte NWE LLP, a member firm of Deloitte Touche Tohmatsu Limited, a UK private company limited by guarantee ("DTTL"). DTTL and each of its member firms are legally separate and independent entities. DTTL and Deloitte NWE LLP do not provide services to clients. Please see www.deloitte.com/about to learn more about our global network of member firms.

© 2019 Deloitte MCS Limited. All rights reserved.